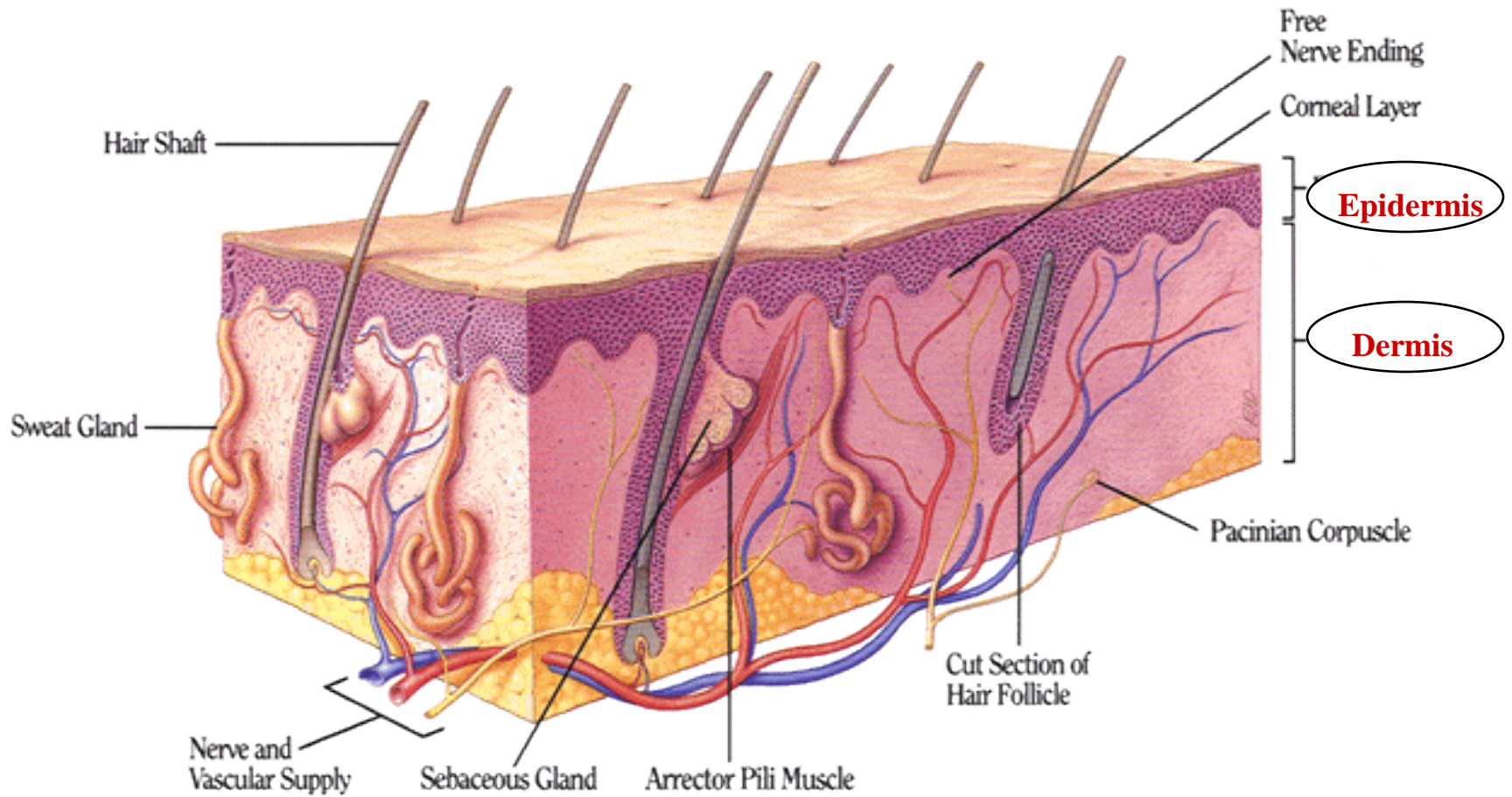


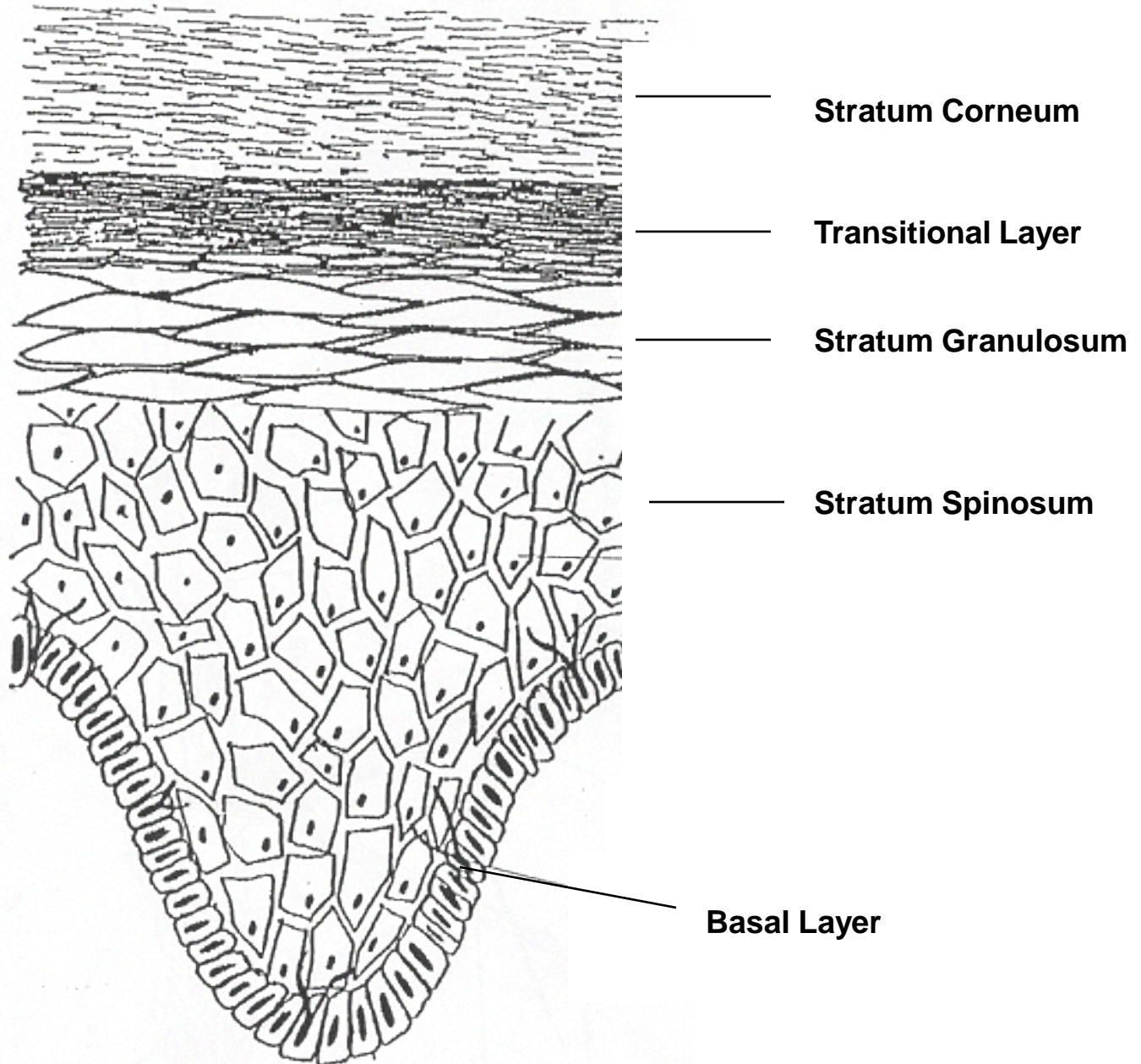
Skin Structure



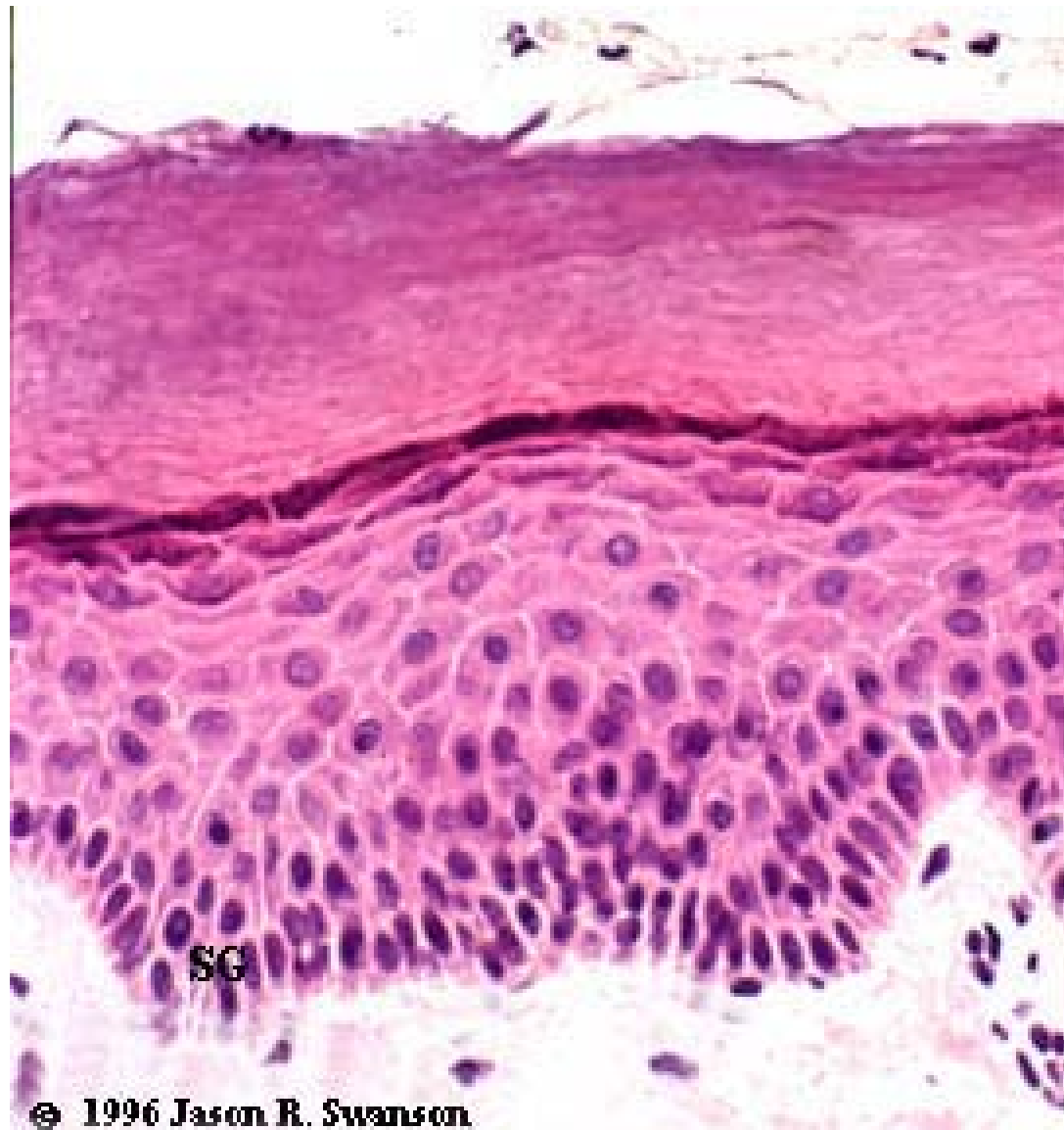
Epidermis

Differentiation

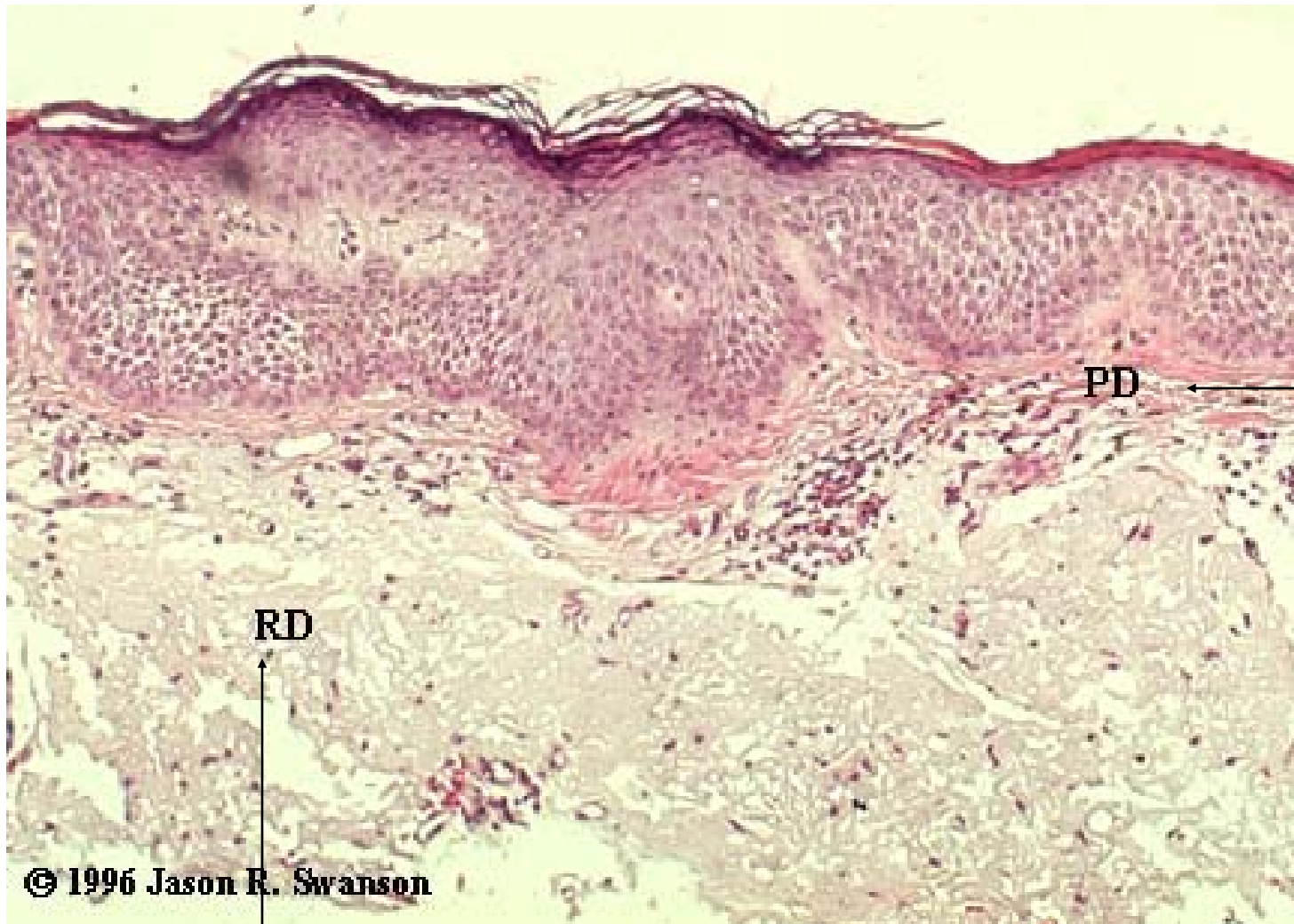
- Cells move from basal layer to stratum corneum
- 1) Synthesis & modification of proteins, especially keratins
- 2) Appearance of new organelles, reorganization of organelles, loss of organelles
- 3) Change in cell size & shape
- 4) Changes in properties of membranes
- 5) Dehydration
- 6) Desquamation



Epidermis



Skin Structure (Dermis)



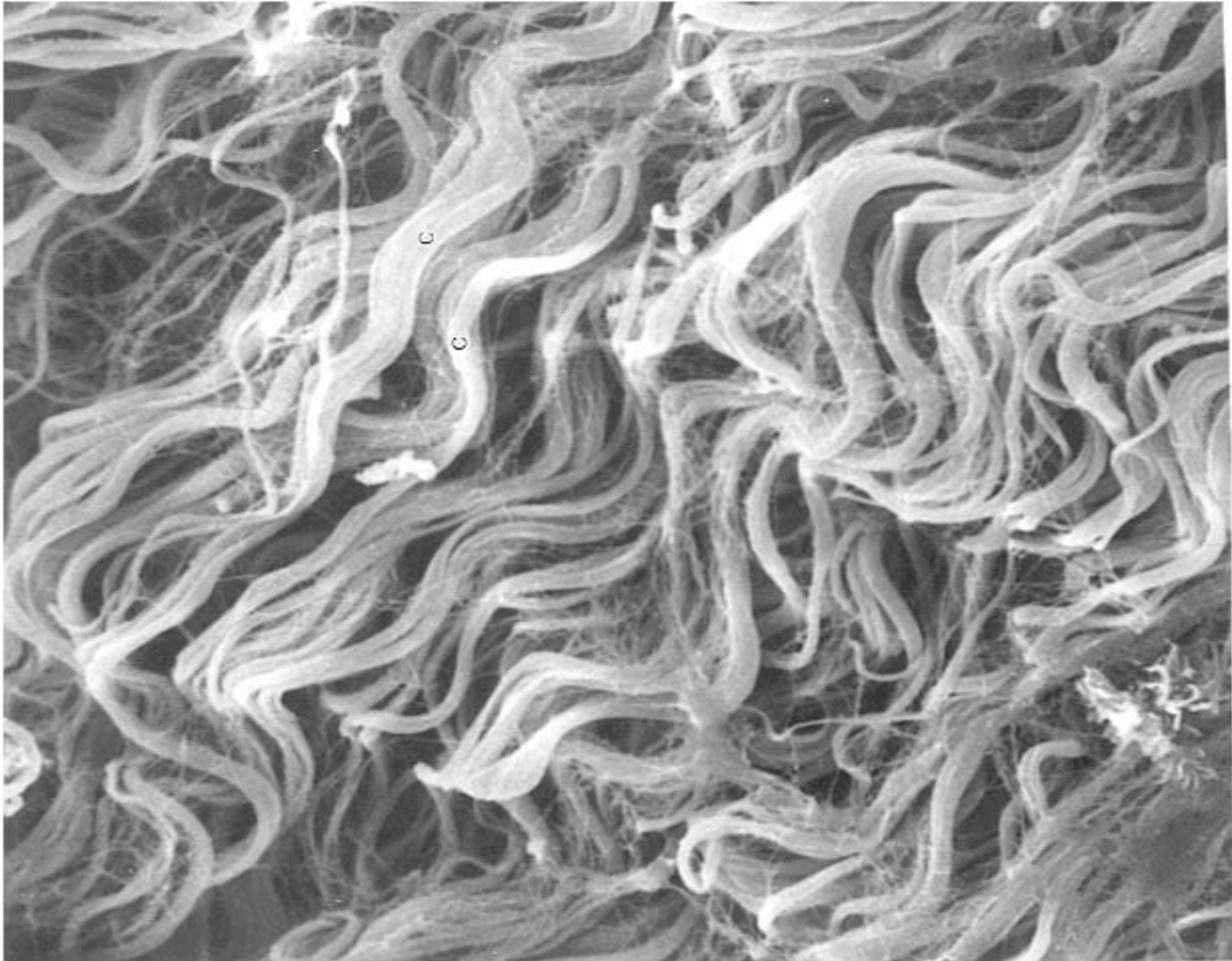
Papillary
Dermis

RD

Reticular Dermis

© 1996 Jason R. Swanson

Collagen



Ingredient Mechanisms

Super Sterol Ester & SEFA- hydration; barrier repair

Farnesol – Precursor in biosynthesis of lipids & sterols; farnesylation of epidermal proteins

Niacinamide – increase growth & differentiation

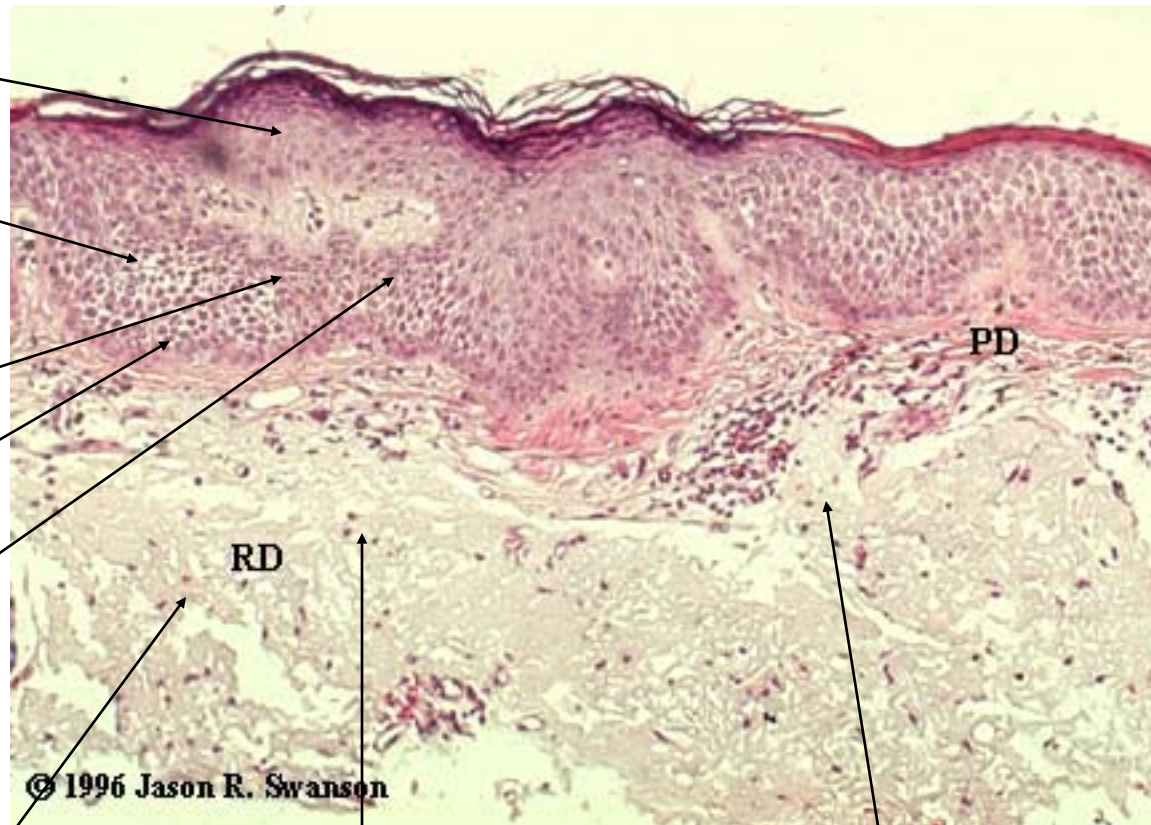
Allantoin – promotes normal keratinization

Anti-oxidants – Vitamin E & Green Tea Extract; scavengers of free radicals

Farnesol – signal presence to make collage; farnesylation of dermal proteins

Niacinamide – increase collagen production; increase DNA synthesis & cell growth

Pentapeptide- Signal to make collage; stimulates release of growth factors from dermal matrix -> generation of new matrix; reductions of GAGs



Epidermis

Dermis